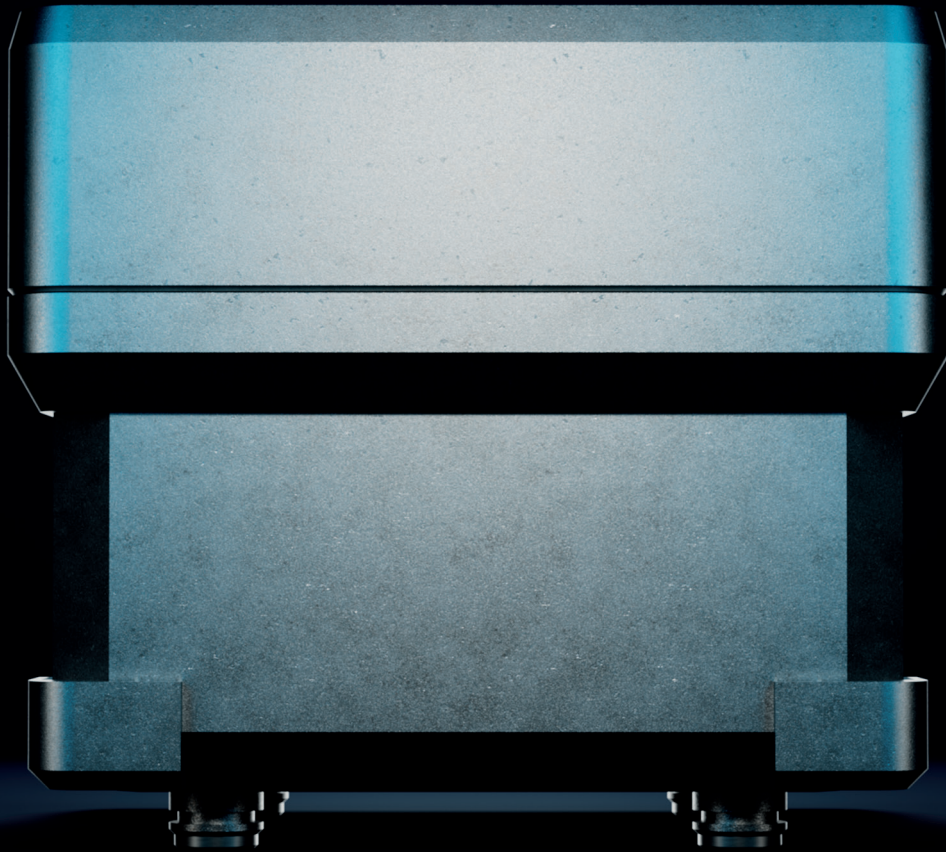




NTS

Nuclear Transport
Solutions



The NTS

SWTC-255

A Type B(U)F Transport Package
(Preliminary Design)

Without transport there is no nuclear industry

NTS supports the global nuclear market by providing standalone or end-to-end solutions to nuclear transport and logistics challenges.

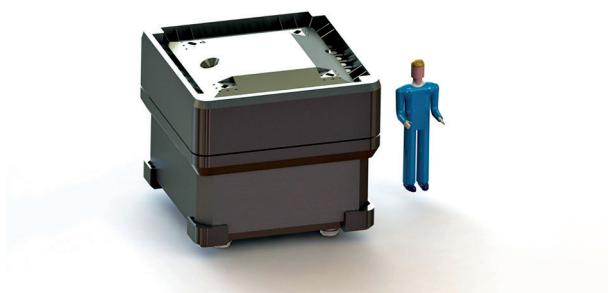
Scan the QR code to view an online version of this document.



The SWTC-255 is currently being developed to transport all the UK's Low Heat Generating Waste (LHGW) from waste and storage sites to a Geological Disposal Facility.

It is designed to be transported by road, rail and sea, and within the UK's most restrictive rail gauge (W6a). It is designed to move waste in the form of standardised containers known as Disposal Units (see below). The variety of Disposal Units provides flexibility for UK sites in the disposal of LHGW. However, other content could be transported in the large Standard Waste Transport Container (SWTC) cavity, subject to appropriate substantiation.

To ensure it is capable of transporting the full UK Derived Inventory, the SWTC-255 shall be licensed as a **Type B(U)F**, in full compliance with IAEA SSR-6 requirements.



Please ask an NTS representative for further information on design limits and plant interface requirements.

SWTC-255 dimensions	Metres
Overall Width x Depth	2.62 x 2.62
Overall Height	2.32

Overall length:

Body Width x Depth (without lid)	2.38 x 2.38
Body Height (without lid)	1.65

SWTC-255 Cavity	Metres
Maximum Width x Depth	1.88
Maximum Height	1.5

Shielding (7900kg/m³):

Sides x base x Lid	0.255 x 0.255 x 0.255
--------------------	-----------------------

Component	Weight (kg)
SWTC Body	34000
SWTC Lid (Inc Shock Absorber)	15000
Internal Furniture Allowance	1000
Total package	50000
Payload	12000
Maximum gross laden weight	62000



500L Drum



3m³ Drum



MBGWS Box



3m³ Box Side Lifting Variant



3m³ Box Corner Lifting Variant